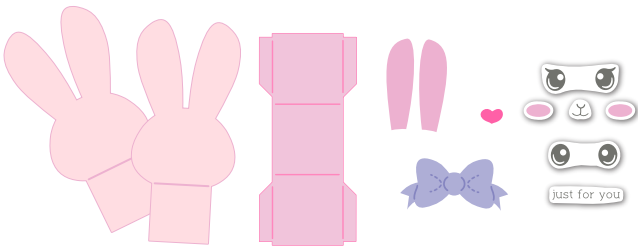


## TE STYLE SHEET > BUNNY TREAT WRAP

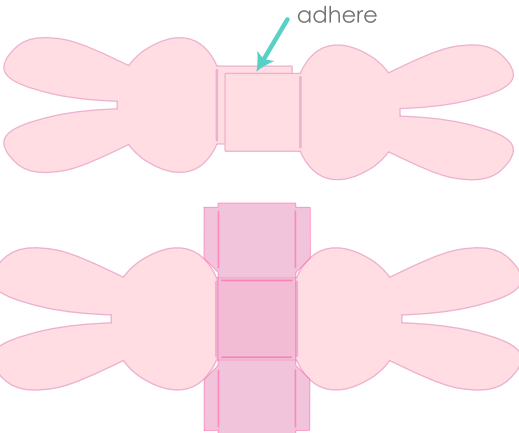
**1** Die cut your pieces, cutting 2 bunny heads. Decorate with the clear stamps and ear, nose, and bow die cut accents.



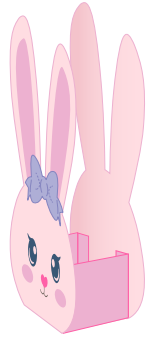
The snout stamp is designed to work alone, but you can add the die-cut nose over the stamped one for extra cuteness!

**2** Fold the bunny heads and the tabbed rectangle along the score lines and reflatten.

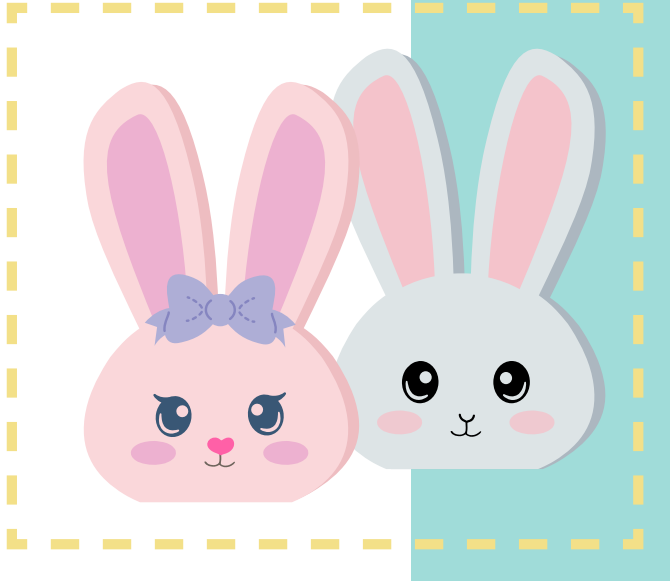
**3** Glue the two bunny faces together by adhering the bottom tabs on top of each other.



**4** Lay your tabbed rectangle across your two bunny heads like a cross.



**5** Fold the cross piece up, fold the bunny heads up and glue the tabs to the inside of the bunny head creating a treat container.



**6** Fill with treats!

